

BOSTON HIGH SCHOOL TRANSITION PACK

PSYCHOLOGY

Welcome to psychology. If you are curious to understand human behaviour then you have come to the right place.



To give you an idea of the topics covered in Edexcel A-level psychology the specification is a good starting point.

Take a look.....

<https://qualifications.pearson.com/en/qualifications/edexcel-alevels/psychology-2015.html>

Hopefully there are topics in the specification that spark your curiosity. You can also view past examination papers so you can get an idea of the layout of the three papers and the challenges that are ahead.

The following links will enable you to explore topic areas ahead of starting the course in September. The aim is to get you thinking about areas we will cover such as Prejudice, Obedience, Memory, Aggression, Schizophrenia, Psychology as a science and Nature/Nurture debate.

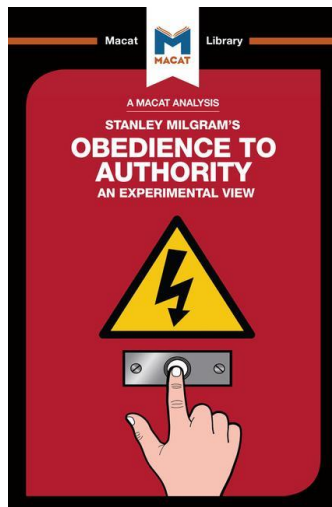
PREJUDICE



Watch this video on prejudice. The film is from 1968. Are the same issues apparent today? If you were a child in this class what do you think you would have done?

https://www.youtube.com/watch?v=1mcCLm_LwpE

OBEDIENCE



Watch this video on obedience. This study is from 1963. Do you think you would deliver a 450 volt electric shock to a stranger because they got a 'word pair' wrong?

<https://www.youtube.com/watch?v=rdrKCiEhC0>

MEMORY



Think of an experience that you shared with someone else. Write down, in detail, your version of what happened from start to finish in respect of that experience. Get the other person to do the same. Then compare what you have written – are the recollections absolutely identical? If not, why not? What does this tell us about human memory? What does it tell us about eye-witness testimony?

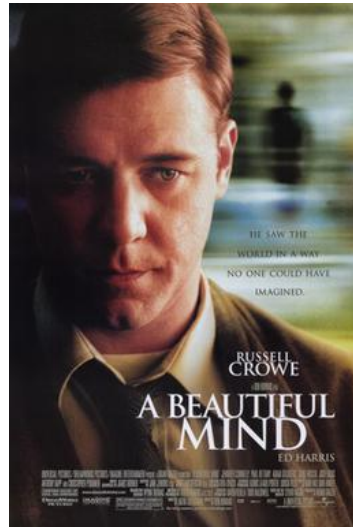
Watch an episode of 24 hours in Police Custody. See how skilled and careful the Police Officers are when conducting interviews with witnesses and suspects. The techniques used by the Police today are grounded in psychological research, a good way of seeing how academic work can be applied in the real world.

AGGRESSION



Do you think people are born aggressive or they become aggressive due to environmental factors and life experiences? Explore the work of Adrian Raine. You can look on Youtube, there are short videos and longer ones (over an hour so get your popcorn at the ready for that one) Do you agree with Raine's findings?

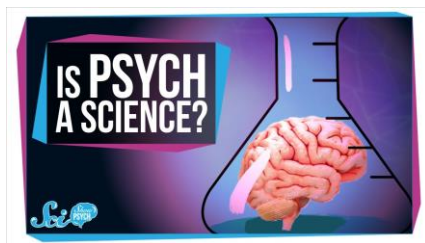
SCHIZOPHRENIA



Watch the film 'A beautiful Mind' to give you an insight into the condition, or a BBC documentary on John Nash (both available via Youtube)

There are many debates in psychology. Two that we explore are:

IS PSYCHOLOGY A SCIENCE? and IS HUMAN BEHAVIOUR DUE TO NATURE OR NURTURE



Take a look at the debates on the internet. Aim to create a poster/mindmap for each – what evidence can you find for each side of these two debates?

We very much look forward to meeting you in September.
The Psychology Department